

Peninsula
Agency on
Aging



FY-2022
Annual Report

2023 CALENDAR



Linking Seniors & Services since 1974

NEWPORT NEWS

739 Thimble Shoals Blvd. Suite 1006
Newport News, VA 23606

(757) 873-0541
www.paainc.org

WILLIAMSBURG

4551 John Tyler Hwy, Suite 101
Williamsburg, VA 23185

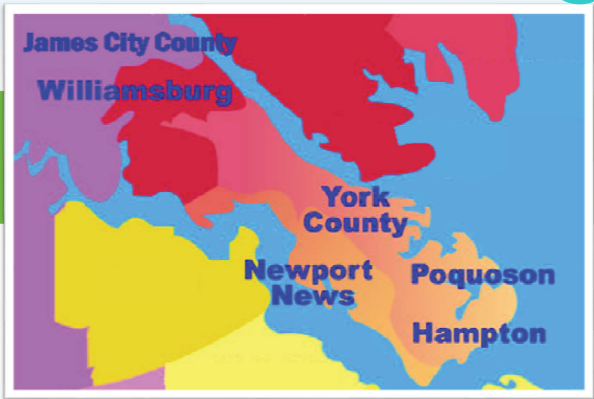
Serving Newport News, Hampton, York County, Poquoson, Williamsburg & James City County

The mission of Peninsula Agency on Aging, Inc. is to support the independence and quality of life of Peninsula residents primarily 60 years and over by advocating, arranging, or providing vital human services.

MISSION

To support the independence and quality of life of Peninsula residents primarily 60 and over by advocating, arranging or providing vital human services.

Programs & Services



Programs & Services

- Adult Day Care Respite
- Care Coordination
- Caregiver Support
- Congregate Dining Centers
- Elder Abuse Prevention Program
- Energy & Emergency Assistance
- Health & Wellness Programs
- Home Delivered Meals
- Information and Assistance
- In-Home Personal Care Services
- Non-Emergency Medical Transportation
- Veteran Directed Care
- VICAP- Insurance Counseling
- Workforce Development

NEWPORT NEWS
739 Thimble Shoals Blvd. Suite 1006
Newport News, VA 23606
Phone: 757.873.0541

WILLIAMSBURG
4551 John Tyler Hwy, Suite 101
Williamsburg, VA 23185
Phone: 757.345.6277



COMPASSION

TEAMWORK

INCLUSIVE

generous

GENUINE

COMMUNITY

CONNECTING

CARING

strong

TRUSTWORTHY

greatness

INTERACTION

onepaa

empathy

PROACTIVE

UNITED

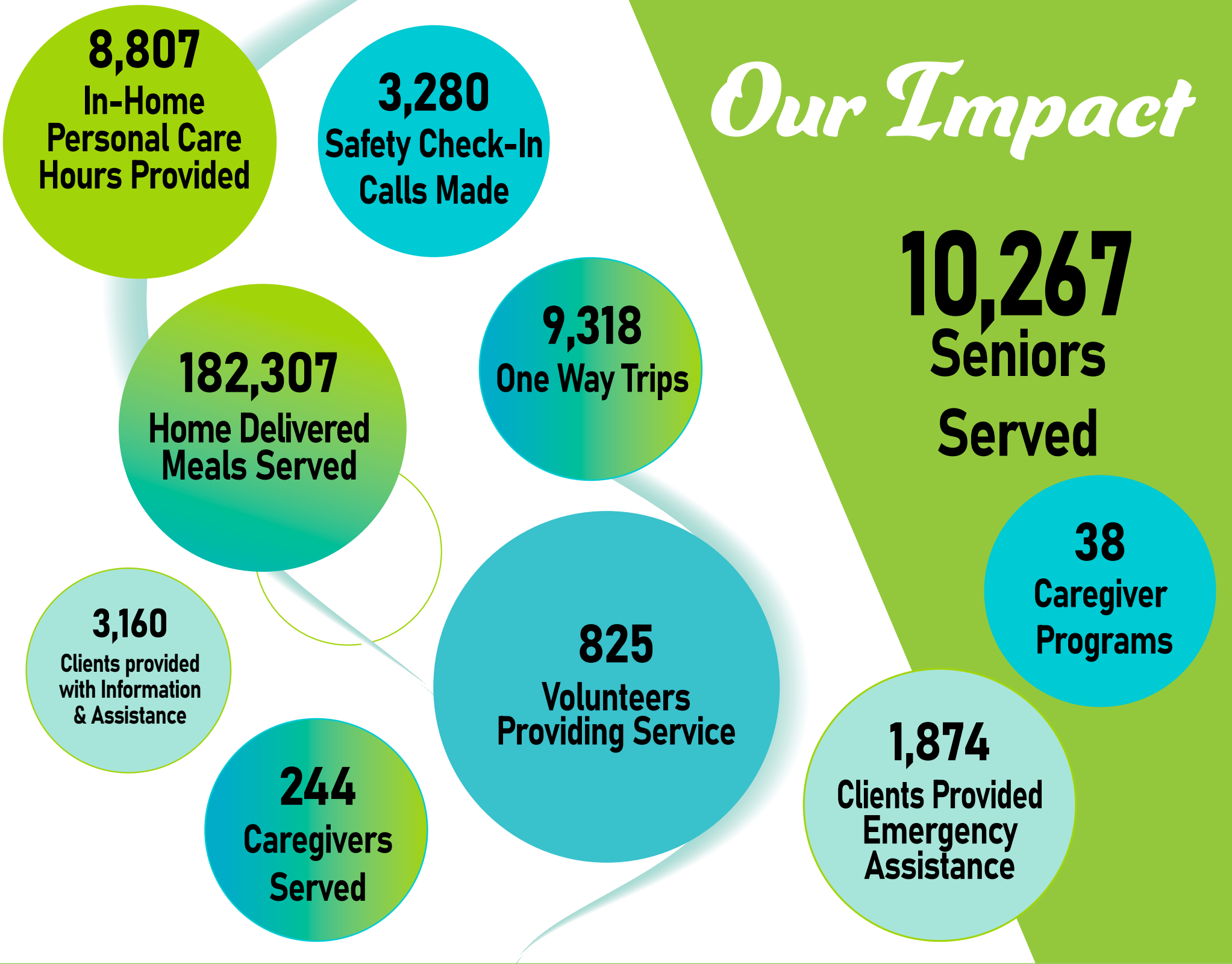
cooperative

WELCOMING

2023

JANUARY

SUNDAY	MONDAY	TUESDAY	WEDNESDAY	THURSDAY	FRIDAY	SATURDAY
01	02	03	04	05	06	07
08	09	10	11	12	13	14
15	16	17	18	19	20	21
22	23	24	25	26	27	28
29	30	31				
					<div>DECEMBER</div> <div>S M T W T F S01 02 0304 05 06 07 08 09 1011 12 13 14 15 16 1718 19 20 21 22 23 2425 26 27 28</div>	<div>FEBRUARY</div> <div>S M T W T F S01 02 0304 05 06 07 08 09 10 1112 13 14 15 16 17 1819 20 21 22 23 24 2526 27 28</div>



2023

FEBRUARY

SUNDAY	MONDAY	TUESDAY	WEDNESDAY	THURSDAY	FRIDAY	SATURDAY
			01	02	03	04
05	06	07	08	09	10	11
12	13	14	15	16	17	18
19	20	21	22	23	24	25
26	27	28				
					<div>JANUARY</div> <div>S M T W T F S 01 02 03 04 05 06 07 08 09 10 11 12 13 14 15 16 17 18 19 20 21 22 23 24 25 26 27 28 29 30 31</div>	<div>MARCH</div> <div>S M T W T F S 01 02 03 04 05 06 07 08 09 10 11 12 13 14 15 16 17 18 19 20 21 22 23 24 25 26 27 28 29 30 31</div>

Community Service

838
Transportation
Clients

For adults
over the age of 60,
the Community Services
department supports older
adults with the Home
Delivered meals program
Congregate Dining and
Non-Emergency Medical
Transportation services.

766
Volunteers
Delivering Meals

182,307
Home Delivered
Meals Served

9,318
One-Way Tips
Provided

9,250
Dining Center
Meals Served

2023

MARCH

SUNDAY	MONDAY	TUESDAY	WEDNESDAY	THURSDAY	FRIDAY	SATURDAY
			01 Community Forum on Aging	02	03	04
05	06	07	08	09	10	11
12	13	14	15	16	17	18
19	20	21	22	23	24	25
26	27	28	29	30	31	
					<div>FEBRUARY</div> <div>S M T W T F S</div> <div>05 06 07 08 09 10 11</div> <div>12 13 14 15 16 17 18</div> <div>19 20 21 22 23 24 25</div> <div>26 27 28</div>	<div>APRIL</div> <div>S M T W T F S</div> <div>02 03 04 05 06 07 08</div> <div>09 10 11 12 13 14 15</div> <div>16 17 18 19 20 21 22</div> <div>23 24 25 26 27 28 29</div> <div>30</div>

Care Services

12,043
Information & Assistance
Provided

502
Health Promotion
Classes Provided

3,280
Safety Check-In
Calls Made

151
Clients provided
Emergency
Assistance

8,807
In-Home Personal
Care Hours Provided

3,139
Adult Day Care
Hours Provided

If health or other challenges arise or if you're not sure what kind of help you need, PAA can provide guidance on housing options, in-home care services, home-delivered meals and support for families and caregivers. We work closely with community service providers so that we can connect you with the services that address your unique needs.

PAA helps older adults age in place, respecting their desire to live independently and securely in their home of choice.

In Memory of David R. Murray, Executive Director of As You Wish; 1956-2018

2023

APRIL

SUNDAY	MONDAY	TUESDAY	WEDNESDAY	THURSDAY	FRIDAY	SATURDAY
						01
02	03	04	05	06	07	08
09	10	11	12	13	14	15
16	17	18	19	20	21	22
23	24	25	26	27	28	29
30					<div>MARCH</div> <div>S M T W T F S 05 06 07 01 02 03 04 12 13 14 15 16 17 18 19 20 21 22 23 24 25 26 27 28 29 30 31</div>	<div>MAY</div> <div>S M T W T F S 07 01 02 03 04 05 06 14 15 16 17 18 19 20 21 22 23 24 25 26 27 28 29 30 31</div>

The Clients We Serve



Race/ethnicity (reported)

Black/African American: 54%

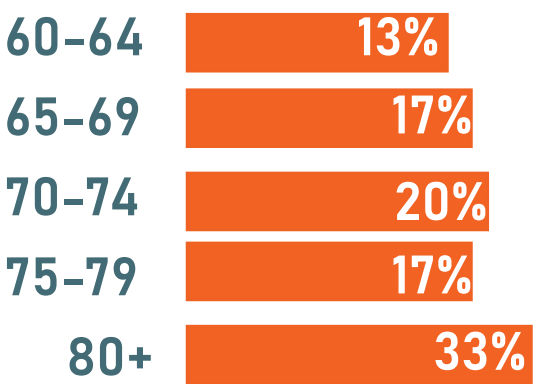
White/Caucasian: 41%

Hispanic/Latino: 2%

American Indian/Alaska Native: 1%

Asian: 1%

Other: 1%



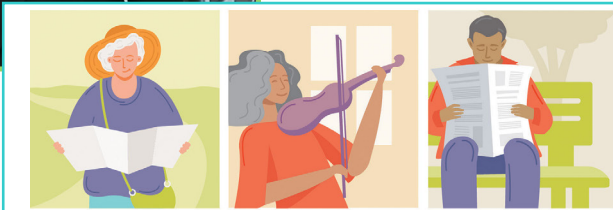
57%
Live Alone

22%
Live with Spouse

Female
70%

Male
30%

86% Live in Poverty



AGE MY WAY: MAY 2022

2023

MAY

SUNDAY

MONDAY

TUESDAY

WEDNESDAY

THURSDAY

FRIDAY

SATURDAY

	01	02	03	04	05	06
07	08	09	10	11	12	13
14	15	16	17	18	19	20
21	22	23	24	25	26	27
28	29	30	31			
					<div>APRIL</div> <div>S M T W T F S 01 02 03 04 05 06 07 08 09 10 11 12 13 14 15 16 17 18 19 20 21 22 23 24 25 26 27 28 29 30</div>	<div>JUNE</div> <div>S M T W T F S 01 02 03 04 05 06 07 08 09 10 11 12 13 14 15 16 17 18 19 20 21 22 23 24 25 26 27 28 29 30</div>



1,302
Safety Check-In
Calls Made

395
Friendly Visits
Made



185
Clients Served

37
Volunteers
Providing
Service

286
Transportation
Trips Provided



Interesting in becoming a Caring Neighbor? Call (757) 246-1912 to learn more!

2023

JUNE

SUNDAY

MONDAY

TUESDAY

WEDNESDAY

THURSDAY

FRIDAY

SATURDAY

					01	02	03											
04	05	06	07	08	09	10												
11	12	13	14	15	16	17												
18	19	20	21	22	23	24												
25	26	27	28	29	30													
					MAY		JULY											
					S	M	T	W	T	F	S	S	M	T	W	T	F	S
					07	01	02	03	04	05	06	02	03	04	05	06	07	08
					14	08	09	10	11	12	13	09	10	11	12	13	14	15
					21	15	16	17	18	19	20	16	17	18	19	20	21	22
					28	22	23	24	25	26	27	23	24	25	26	27	28	29
						29	30	31				30	31					

In the Community



2023

JULY

SUNDAY MONDAY TUESDAY WEDNESDAY THURSDAY FRIDAY SATURDAY

						01																																																																					
02	03	04	05	06	07	08																																																																					
09	10	11	12	13	14	15																																																																					
16	17	18	19	20	21	22																																																																					
23	24	25	26	27	28	29																																																																					
30	31				<div><div>JUNE</div><table><tr><td>S</td><td>M</td><td>T</td><td>W</td><td>T</td><td>F</td><td>S</td></tr><tr><td>04</td><td>05</td><td>06</td><td>07</td><td>08</td><td>09</td><td>10</td></tr><tr><td>11</td><td>12</td><td>13</td><td>14</td><td>15</td><td>16</td><td>17</td></tr><tr><td>18</td><td>19</td><td>20</td><td>21</td><td>22</td><td>23</td><td>24</td></tr><tr><td>25</td><td>26</td><td>27</td><td>28</td><td>29</td><td>30</td><td></td></tr></table></div> <div><div>AUGUST</div><table><tr><td>S</td><td>M</td><td>T</td><td>W</td><td>T</td><td>F</td><td>S</td></tr><tr><td>06</td><td>07</td><td>08</td><td>09</td><td>10</td><td>11</td><td>12</td></tr><tr><td>13</td><td>14</td><td>15</td><td>16</td><td>17</td><td>18</td><td>19</td></tr><tr><td>20</td><td>21</td><td>22</td><td>23</td><td>24</td><td>25</td><td>26</td></tr><tr><td>27</td><td>28</td><td>29</td><td>30</td><td>31</td><td></td><td></td></tr></table></div>	S	M	T	W	T	F	S	04	05	06	07	08	09	10	11	12	13	14	15	16	17	18	19	20	21	22	23	24	25	26	27	28	29	30		S	M	T	W	T	F	S	06	07	08	09	10	11	12	13	14	15	16	17	18	19	20	21	22	23	24	25	26	27	28	29	30	31		
S	M	T	W	T	F	S																																																																					
04	05	06	07	08	09	10																																																																					
11	12	13	14	15	16	17																																																																					
18	19	20	21	22	23	24																																																																					
25	26	27	28	29	30																																																																						
S	M	T	W	T	F	S																																																																					
06	07	08	09	10	11	12																																																																					
13	14	15	16	17	18	19																																																																					
20	21	22	23	24	25	26																																																																					
27	28	29	30	31																																																																							



Board
of
Directors

Fiscal 2022 Board: 10/1/21-09/30/22

The Peninsula Agency on Aging is directed “by leaders in the community who have the respect, capacity and authority necessary to convene all interested persons, access needs, design solutions, track overall success, stimulate change and plan community responses for the present and for the future” [45 CFR 1321.53(10)].

Advisory Council:

Valerie Price, Chair;
Marcella Williams, Vice Chair;
Audrey Glover, Secretary

Endowment Board:

Dr. Martha Tennille: President;
Jesse Wallace: Vice President;
Robert Spencer: Secretary/
Treasurer

Williamsburg Advisory Council:

Terry Sweaney, Chair;
Linda Schiavone,
outgoing Vice
Chair/Secretary;
Ellie Rest,
incoming Vice
Chair/Secretary

Theodore Juraschek, Chair, At Large Representative, **Dr. Mary Powell**, Vice Chair (Poquoson), **Robin K. (Rob) Kutz**, Esquire Secretary/Treasurer; At Large Representative

Thomas Fukawa (Hampton), **Lourdes B. Guidicelli-Gadea** (York County), **Rasheena Harris** (Newport News), **Ingo Huemer** (Newport News), **William S. Massey** (Ex-Officio), **Dr. Ethlyn McQueen-Gibson** (Hampton), **Gregg Shivers, MD** (Riverside Representative), **Dr. Martha S. Tennille**, (Endowment Board Chair), **Barbara Watson**, (James City County), **Dr. John Whitley** (Williamsburg)

2023

AUGUST

SUNDAY	MONDAY	TUESDAY	WEDNESDAY	THURSDAY	FRIDAY	SATURDAY
		01	02	03	04	05
06	07	08	09	10	11	12
13	14	15	16	17	18	19
20	21	22	23	24	25	26
27	28	29	30	31		
					<div><div>JULY</div><div>S M T W T F S02 03 04 05 06 07 0809 10 11 12 13 14 1516 17 18 19 20 21 2223 24 25 26 27 28 2930 31</div></div>	<div><div>SEPTEMBER</div><div>S M T W T F S03 04 05 06 07 0809 10 11 12 13 14 1516 17 18 19 20 21 2223 24 25 26 27 28 29 30</div></div>

PAA
Recognition



Reginald Green
5 Years



Fred Atzrodt
5 Years



Beverly Nelson
10 Years



Frank Seely
30 Years



Tiffany Spears
10 Years



Linda Walters
15 Years



Lisha Mullen
15 Years



Board of Directors
Ted Juraschek (7 years)
Rob Kutz (7 years)

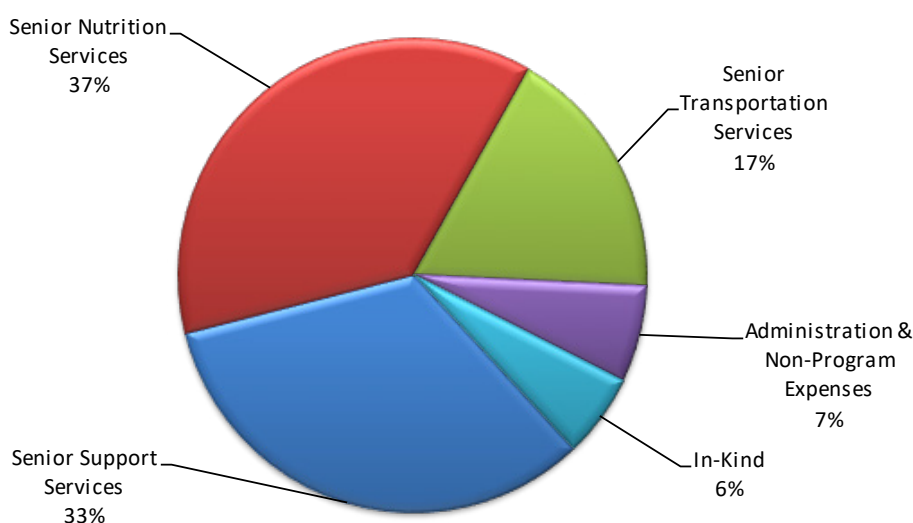
Not Pictured: Bernice Hilll (5 years), Geraldine Richardson (15 Years), Mary Ann Meyer (15 Years)

2023 SEPTEMBER

SUNDAY	MONDAY	TUESDAY	WEDNESDAY	THURSDAY	FRIDAY	SATURDAY
					01	02
03	04	05	06	07	08	09
10	11	12	13	14	15	16
17	18	19	20	21	22	23
24	25	26	27	28	29	30
					<div><div>AUGUST</div><div><div>S</div><div>M</div><div>T</div><div>W</div><div>T</div><div>F</div><div>S</div></div><div><div>06</div><div>07</div><div>08</div><div>09</div><div>10</div><div>11</div><div>12</div></div><div><div>13</div><div>14</div><div>15</div><div>16</div><div>17</div><div>18</div><div>19</div></div><div><div>20</div><div>21</div><div>22</div><div>23</div><div>24</div><div>25</div><div>26</div></div><div><div>27</div><div>28</div><div>29</div><div>30</div><div>31</div></div></div>	<div><div>OCTOBER</div><div><div>S</div><div>M</div><div>T</div><div>W</div><div>T</div><div>F</div><div>S</div></div><div><div>01</div><div>02</div><div>03</div><div>04</div><div>05</div><div>06</div><div>07</div></div><div><div>08</div><div>09</div><div>10</div><div>11</div><div>12</div><div>13</div><div>14</div></div><div><div>15</div><div>16</div><div>17</div><div>18</div><div>19</div><div>20</div><div>21</div></div><div><div>22</div><div>23</div><div>24</div><div>25</div><div>26</div><div>27</div><div>28</div></div><div><div>29</div><div>30</div><div>31</div></div></div>

Fiscal 2022 Figures: 10/1/21-09/30/22

Expenditures



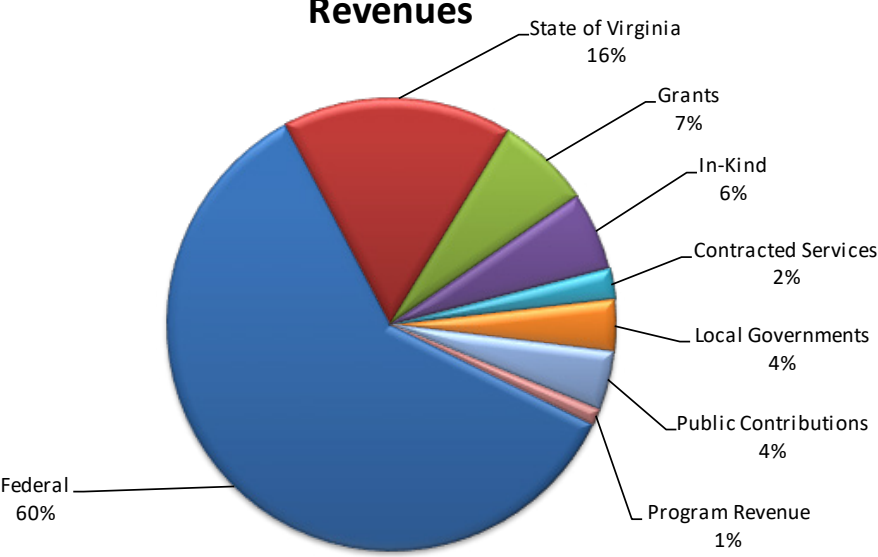
Expenses 2022

Senior Support Services	\$1,727,408
Senior Nutrition Services	\$1,946,193
Senior Transportation Services	\$918,083
In-Kind	\$299,468
Administrative Expenses	\$345,368
Total:	\$5,236,520

Revenues 2022

Federal	\$3,249,925
State of Virginia	\$890,280
Grants	\$366,500
In-Kind	\$299,468
Contracted Services	\$119,408
Local Governments	\$197,376
Public Contributions	\$225,235
Program Revenue	\$64,371
Total:	\$5,412,563

Revenues



Every Dollar Counts

2023

OCTOBER

SUNDAY	MONDAY	TUESDAY	WEDNESDAY	THURSDAY	FRIDAY	SATURDAY
01	02	03	04	05	06	07
08	09	10	11	12	13	14
15	16	17	18	19	20	21
22	23	24	25	26	27	28
29	30	31				
					SEPTEMBER	NOVEMBER
					S M T W T F S	S M T W T F S
					03 04 05 06 07 08 09	05 06 07 08 09 10 11
					10 11 12 13 14 15 16	12 13 14 15 16 17 18
					17 18 19 20 21 22 23	19 20 21 22 23 24 25
					24 25 26 27 28 29 30	26 27 28 29 30

PAA is grateful to all public and private funders who invest in the fulfillment of our mission. Below we recognize individuals, corporations, foundations, and other private donors who provided gifts, programmatic support, event tickets, sponsorships, in-kind gifts, and bequests, \$100 or more, during the fiscal year ending September 30, 2022.

Individuals

Michelle Baquie • Ursula Campbell • Jennifer Campo • Nancy Clark • Martha Clark • Claudette Clos • Patricia Cofer • Carol Cook • David and Linda Dellinger • Jerry Dodson • Charles Dunn • Shirley Edwards • Steve and Anne Elder • Forrest Ellingsworth • Irene Ferrainolo • Robert & Elise Fitzmaurice • Nancy Forbes • Paul & Karen Forster • Thomas Fukawa • Gwen Fuller • Herbert and Patricia Green • Lourdes Guidicelli • Mary Beth Hall • Barbara Hart • Linda Hartley • Ella House • Ingo Huemer • Robert and Susan Jennaro • Ted Juraschek • Amber Levitt • Michelle Loiacono • Kimberly Longoria • William Lucas • William Massey • Rodney Maxwell • Dr. Ethlyn McQueen-Gibson • Dawn Michelle • Margaret Mondul • Nancy Moran • Terence Newton • Neha Parikh • Cary Parron • Gerald Patesel • Alphonso Payne • Don Rencsok • Charles and Dianne Rencsok • Jean Revell • Tim Roach • Lawrence Rollinger • Viola Ross • Steve and Amy W. Sandford • Randall Schmidt • Gevell & Embrolic Selby • Charles Shirley • Barrett and Nancy Shrout • Diane Sinclair • Willie Smith • Nellie Smith • Tiffany Speas • Loye Spencer • Noel Taylor • Dr. Martha & Geoff Tennille • William and Nancy Trimble • Bobby Vassar • Kathy Vesley • Joyce White • Beverly Williams • Amy Witcover • Aaron Woodard • Kathy Wooldridge • Arnold and Betty Young

Make a difference with your donation today!
(757) 873-0541 • www.paainc.org

Corporations/Foundations

Bay Area Powersports • CarMax • Center for Child & Family Services • City of Hampton • City of Newport News • City of Poquoson • City of Williamsburg • Colonial Downs • Colony Auto Enthusiasts • Community Services Coalition • Denbigh United Presbyterian Church • Dominion Energy • Federal Transit Authority • First United Methodist Church of Newport News • Hampton Delta Foundation, Inc. • Hampton Retired Teacher's Association • James City County • Knights of Columbus - Charity Bingo • Langley for Families Foundation • Movement Mortgage Foundation • Navy Federal Credit Union • Newport News Club, NANBPWC, INC. • Northhampton Lions Club • Pearson Toyota • Peninsula Network Exchange Club • Riverside Health System • Rosie's Gaming Emporium • Sentara Healthcare • St. John's Episcopal Charitable Trust • St. Stephen's Episcopal Church • Tabernacle United Methodist Church • The Spaugh Trust • The Women's Club of Hampton Virginia • Towne Bank • Trinity Evangelical Lutheran Church • TYGES International • United Way Of South Hampton Roads • United Way of the Virginia Peninsula • United Way Worldwide • Virginia Health Services • Vision Machine & Fabrication Corp. • Williamsburg Community Foundation • Williamsburg Health Foundation • Williams Mullen Law • William & Mary Law School • Williamsburg Presbyterian • Williamsburg Unitarian Universalist • York County



Supporters

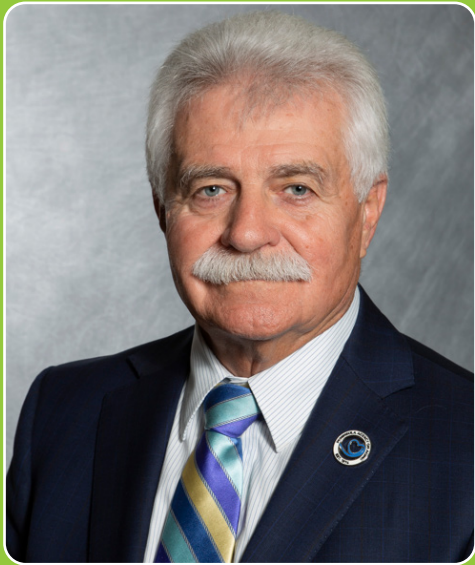
2023

NOVEMBER

SUNDAY MONDAY TUESDAY WEDNESDAY THURSDAY FRIDAY SATURDAY

			01	02	03	04
05	06	07	08	09	10	11
12	13	14	15	16	17	18
19	20	21	22	23	24	25
26	27	28	29	30		
					<div>OCTOBER</div> <div><div>S</div><div>M</div><div>T</div><div>W</div><div>T</div><div>F</div><div>S</div></div> <div><div>01</div><div>02</div><div>03</div><div>04</div><div>05</div><div>06</div><div>07</div></div> <div><div>08</div><div>09</div><div>10</div><div>11</div><div>12</div><div>13</div><div>14</div></div> <div><div>15</div><div>16</div><div>17</div><div>18</div><div>19</div><div>20</div><div>21</div></div> <div><div>22</div><div>23</div><div>24</div><div>25</div><div>26</div><div>27</div><div>28</div></div> <div><div>29</div><div>30</div><div>31</div></div>	<div>DECEMBER</div> <div><div>S</div><div>M</div><div>T</div><div>W</div><div>T</div><div>F</div><div>S</div></div> <div><div>03</div><div>04</div><div>05</div><div>06</div><div>07</div><div>08</div><div>09</div></div> <div><div>10</div><div>11</div><div>12</div><div>13</div><div>14</div><div>15</div><div>16</div></div> <div><div>17</div><div>18</div><div>19</div><div>20</div><div>21</div><div>22</div><div>23</div></div> <div><div>24</div><div>25</div><div>26</div><div>27</div><div>28</div><div>29</div><div>30</div></div> <div><div>31</div></div>

Letter from the CEO



William S. Massey,
President & CEO

Dear Friends, Supporters, and Family,

Due to the COVID-19 pandemic, PAA adjusted operations over the last three years to focus on service delivery to meet the needs of older adults during the pandemic. As vaccinations and treatments for COVID-19 continue to improve, focus is shifting to how we all move forward together.

During the three year pandemic, PAA received \$2,945,600 in new grant funding from the Federal and State government to provide pandemic related services and supports to older adults in our service area. As the pandemic wanes, so does the additional government funding. We are moving into a period of service alignment to adapt to available resources, but PAA is positioning for future growth. This means difficult decisions may have to be made along the way in regards to service delivery and operations.

There are many opportunities that exist for PAA to grow and expand services. The organization is currently expanding into Veteran's services and contracts with private payers. PAA's future success requires the organization and staff to be flexible and innovative in how we approach our work.

To be successful, we must be open to and seize new opportunities, find creative ways to solve problems, and hold ourselves and others accountable to goals and progress while staying true to our core values. PAA is poised to grow and we are committed to success!

Thank you for your partnership as we embark on another year of service to older adults and caregivers in our community.

Sincerely,

William S. Massey,
President & CEO

2023

DECEMBER

SUNDAY

MONDAY

TUESDAY

WEDNESDAY

THURSDAY

FRIDAY

SATURDAY

					01	02
03	04	05	06	07	08	09
10	11	12	13	14	15	16
17	18	19	20	21	22	23
24	25	26	27	28	29	30
31					NOVEMBER S M T W T F S 05 06 07 08 09 10 11 12 13 14 15 16 17 18 19 20 21 22 23 24 25 26 27 28 29 30	
					JANUARY S M T W T F S 07 08 09 10 11 12 13 14 15 16 17 18 19 20 21 22 23 24 25 26 27 28 29 30 31	